

DANIEL SMITH Extra Fine™ Watercolor



216 Color Assortment RACK 1A



Buff Titanium
Series 1 284 600 009
I • 1 • Y • ●



Nickel Titanate Yellow
Series 1 284 600 062
I • 1 • Y • ●



Bismuth Vanadate Yellow
Series 2 284 600 154
I • 2 • N • ●



Hansa Yellow Light
Series 1 284 600 041
II • 2 • N • ●



Cadmium Yellow Lt. Hue
Series 3 284 600 192
II • 2 • N • ●



Cadmium Yellow Med. Hue
Series 3 284 600 184
I • 2 • N • ●



Aureolin (Cobalt Yellow)
Series 3 284 600 006
II • 1 • N • ●



Lemon Yellow
Series 1 284 600 165
I • 2 • N • ●



Hansa Yellow Medium
Series 2 284 600 039
I • 2 • N • ●



Naples Yellow
Series 1 284 600 058
I • 1 • N • ●



Indian Yellow
Series 3 284 600 045
I (NR) • 2 • N • ●



Hansa Yellow Deep
Series 1 284 600 040
I • 2 • N • ●



New Gamboge
Series 1 284 600 060
I • 2 • N • ○



Permanent Yellow Deep
Series 2 284 600 133
I • 2 • N • ○



Pyrryl Orange
Series 2 284 600 126
I • 3 • N • ●



Permanent Orange
Series 3 284 600 071
I • 2 • N • ●



Perinone Orange
Series 3 284 600 066
1 (NR) • 4 • N • ●



Transparent Pyrryl Orange
Series 2 284 600 187
I • 2 • N • ○



Organic Vermilion
Series 2 284 600 064
II • 2 • N • ●



Quinacridone Coral
Series 2 284 600 088
I • 2 • N • ○



Pyrryl Scarlet
Series 3 284 600 085
1 (NR) • 3 • N • ●



Perylene Scarlet
Series 3 284 600 076
II (NR) • 3 • Y • ●



Pyrryl Red
Series 1 284 600 084
I • 3 • N • ●



Perylene Red
Series 3 284 600 075
1 (NR) • 3 • N • ●



Permanent Red
Series 1 284 600 072
II • 4 • N • ●



Permanent Red Deep
Series 1 284 600 069
II (NR) • 3 • N • ●



Quinacridone Red
Series 2 284 600 091
I • 3 • N • ○



Anthraquinoid Red
Series 2 284 600 005
1 (NR) • 3 • N • ○



Alizarin Crimson
Series 1 284 600 004
IV (NR) • 3 • N • ○



Perm. Alizarin Crimson
Series 2 284 600 185
I • 3 • N • ○



Rhodonite Genuine ○
Series 2 284 600 167
I • 2 • N • ○



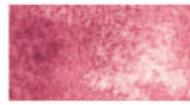
Carmine
Series 2 284 600 020
II (NR) • 4 • N • ●



Rose Madder Genuine
Series 6 284 600 100
IV (NR) • 2 • Y • ○



Opera Pink
Series 1 284 600 198
IV • 1 • Y • ○



Potters Pink
Series 3 284 600 148
I • 2 • Y • ●



Quinacridone Pink
Series 2 284 600 095
II (NR) • 2 • N • ○



Quinacridone Rose
Series 2 284 600 092
I • 3 • N • ○



Quinacridone Magenta
Series 2 284 600 090
1 (NR) • 3 • N • ○



Pyrryl Crimson
Series 2 284 600 127
I • 3 • N • ●



Quinacridone Fuchsia
Series 2 284 600 132
I • 3 • N • ○



Bordeaux
Series 2 284 600 008
II (NR) • 3 • N • ●



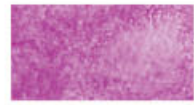
Quinacridone Violet
Series 2 284 600 094
I • 4 • N • ○



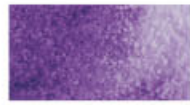
Permanent Violet
Series 3 284 600 073
I • 3 • N • ●



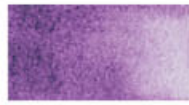
Perylene Violet
Series 3 284 600 201
I • 3 • N • ○



Cobalt Violet
Series 3 284 600 030
1 (NR) • 1 • Y • ○



Cobalt Violet Deep
Series 3 284 600 031
I • 2 • Y • ○



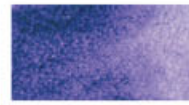
Ultramarine Red
Series 1 284 600 107
I • 1 • Y • ○



Rose of Ultramarine
Series 1 284 600 101
II • 3 • Y • ●



Imperial Purple
Series 2 284 600 174
I • 2 • Y • ●



Ultramarine Violet
Series 1 284 600 108
I • 2 • Y • ○



Amethyst Genuine ○
Series 4 284 600 203
I • 2 • Y • ●



Carbazole Violet
Series 2 284 600 019
1 (NR) • 3 • N • ●



Sugilite Genuine ○
Series 3 284 600 200
I • 2 • Y • ○



Moonglow
Series 2 284 600 057
1 (NR) • 2 • Y • ●



Shadow Violet
Series 2 284 600 188
I • 1 • Y • ○

COLOR INFORMATION

from left to right (I • 2 • Y • ●)

LR - ASTM LIGHTFASTNESS RATING
I=Excellent II=Very Good III=Fair IV=Fugitive
(NR)=Not rated by ASTM. Rating based on DS independent testing.

NON-STAINING/STAINING
1=Non-Staining 2=Low
3=Medium, 4=Staining

GRANULATION
N=No Y=Yes, in varying degrees

TRANSPARENCY
○=Transparent ●=Semi-Transparent
●=Opaque

○ **PrimaTek® Series Paint**
unique colors made with authentic mineral pigments

DANIEL SMITH Extra Fine™ Watercolor



216 Color Assortment RACK 1B



Cobalt Blue Violet
Series 3 284 600 115
I • 2 • Y • ●



Kyanite Genuine ○
Series 4 284 600 186
I • 1 • Y • ○



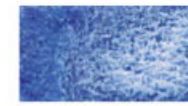
Indanthrone Blue
Series 2 284 600 043
I (NR) • 3 • N • ○



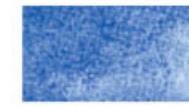
Indigo
Series 1 284 600 046
I (NR) • 3 • N • ○



Sodalite Genuine ○
Series 4 284 600 179
I • 2 • Y • ●



Lapis Lazuli Genuine ○
Series 5 284 600 138
I • 1 • Y • ●



Small Genuine
Series 5 284 600 202
I • 1 • Y • ○



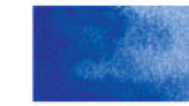
Verditer Blue
Series 2 284 600 173
I • 2 • Y • ●



Cobalt Blue
Series 3 284 600 025
I • 2 • Y • ●



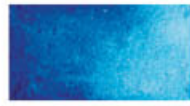
Ultramarine Blue
Series 1 284 600 106
I • 3 • Y • ●



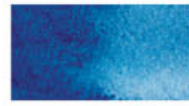
French Ultramarine
Series 2 284 600 034
I • 3 • Y • ●



Phthalo Blue (RS)
Series 1 284 600 119
I • 4 • N • ○



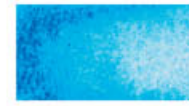
Phthalo Blue (GS)
Series 1 284 600 077
I • 4 • N • ○



Prussian Blue
Series 1 284 600 082
I • 3 • Y • ○



Cerulean Blue, Chromium
Series 2 284 600 021
I • 2 • Y • ●



Manganese Blue Hue
Series 1 284 600 051
II • 3 • Y • ○



SB Turquoise Genuine
Series 5 284 600 150
I • 1 • Y • ●



Cobalt Teal Blue
Series 2 284 600 028
I (NR) • 1 • Y • ●



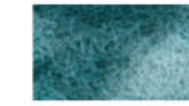
Phthalo Turquoise
Series 1 284 600 080
I • 4 • N • ○



Ultramarine Turquoise
Series 1 284 600 105
I • 2 • Y • ●



Blue Apatite Genuine ○
Series 4 284 600 196
I • 1 • Y • ○



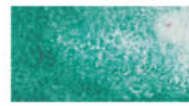
Lunar Blue
Series 2 284 600 183
I • 2 • Y • ●



Amazonite Genuine ○
Series 2 284 600 163
I • 1 • N • ○



Cobalt Turquoise
Series 3 284 600 029
I • 1 • Y • ●



Cobalt Green Pale
Series 3 284 600 027
I • 1 • Y • ●



Fuchsinite Genuine ○
Series 2 284 600 169
I • 1 • N • ○



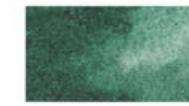
Viridian
Series 2 284 600 112
I • 1 • Y • ○



Phthalo Green (BS)
Series 1 284 600 078
I • 4 • N • ○



Prussian Green
Series 1 284 600 128
I • 3 • Y • ●



Terre Verte
Series 1 284 600 104
I • 1 • Y • ○



Cascade Green
Series 1 284 600 142
I • 3 • Y • ●



Jadeite Genuine ○
Series 4 284 600 195
I • 1 • Y • ●



Phthalo Green (YS)
Series 2 284 600 079
I • 4 • N • ○



Hooker's Green
Series 1 284 600 042
II • 2 • N • ●



Cobalt Green
Series 3 284 600 026
I (NR) • 2 • Y • ●



Permanent Green
Series 1 284 600 070
II • 3 • N • ●



Permanent Green Light
Series 1 284 600 067
II • 2 • N • ●



Green Apatite Genuine ○
Series 3 284 600 197
I • 2 • Y • ●



Perylene Green
Series 2 284 600 194
I • 3 • N • ●



Serpentine Genuine ○
Series 4 284 600 190
I • 1 • Y • ●



Sap Green
Series 2 284 600 102
I • 3 • Y • ○



Phthalo Yellow Green
Series 1 284 600 124
I • 3 • N • ●



Green Gold
Series 2 284 600 139
II • 3 • N • ○



Rich Green Gold
Series 2 284 600 099
I (NR) • 2 • N • ●



Chromium Green Oxide
Series 1 284 600 024
I • 2 • Y • ●



Rare Green Earth
Series 2 284 600 181
I • 1 • Y • ○



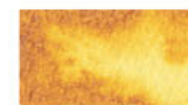
Undersea Green
Series 1 284 600 109
I • 3 • Y • ●



Zoisite Genuine ○
Series 4 284 600 180
I • 2 • Y • ●



Olive Green
Series 1 284 600 063
II • 2 • Y • ●



Nickel Azo Yellow
Series 2 284 600 061
I • 2 • N • ○



Verona Gold Ochre
Series 1 284 600 123
I • 1 • Y • ○



Bronzite Genuine ○
Series 3 284 600 199
I • 1 • Y • ○



French Ochre
Series 1 284 600 134
I • 1 • Y • ○



Burgundy Yellow Ochre
Series 2 284 600 147
I • 1 • Y • ○



Yellow Ochre
Series 1 284 600 114
I • 1 • Y • ○

COLOR INFORMATION
from left to right (I • 2 • Y • ●)

LR - ASTM LIGHTFASTNESS RATING
I=Excellent II=Very Good III=Fair IV=Fugitive
(NR)=Not rated by ASTM. Rating based on DS independent testing.

NON-STAINING/STAINING
1=Non-Staining 2=Low
3=Medium, 4=Staining

GRANULATION
N=No Y=Yes, in varying degrees

TRANSPARENCY
○=Transparent ●=Semi-Transparent
●=Opaque

○ **PrimaTek® Series Paint**
unique colors made with authentic mineral pigments

DANIEL SMITH Extra Fine™ Watercolor



216 Color Assortment RACK 2A



Mars Yellow
Series 1 284 600 054
1 • 1 • Y • ●



Raw Sienna
Series 1 284 600 096
1 • 2 • Y • ●



Trans. Yellow Oxide
Series 1 284 600 131
1 • 1 • Y • ○



Quinacridone Gold
Series 2 284 600 089
1 • 2 • Y • ○



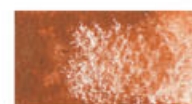
Goethite-Brown Ochre
Series 1 284 600 144
1 • 2 • Y • ●



Italian Deep Ochre
Series 1 284 600 135
1 • 1 • Y • ○



Enviro-Frnd Yellow Iron Oxide
Series 2 284 600 176
1 • 1 • Y • ●



Lunar Earth
Series 1 284 600 050
1 (NR) • 1 • Y • ○



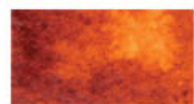
Italian Burnt Sienna
Series 2 284 600 047
1 • 1 • Y • ●



Quinacridone Burnt Orange
Series 2 284 600 086
1 • 2 • Y • ○



Quinacridone Sienna
Series 2 284 600 093
1 • 2 • Y • ○



Quinacridone Deep Gold
Series 2 284 600 152
1 • 2 • N • ○



Pompeii Red
Series 2 284 600 116
1 • 2 • Y • ●



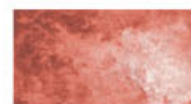
Monte Amiata Ntr. Sienna
Series 1 284 600 056
1 • 2 • Y • ○



Sedona Genuine ○
Series 2 284 600 145
1 • 1 • Y • ●



Terre Ercolano
Series 2 284 600 117
1 • 2 • Y • ●



Minnesota Pipestone ○
Series 2 284 600 143
1 • 1 • Y • ●



Italian Venetian Red
Series 1 284 600 122
1 • 1 • Y • ●



Hematite Burnt Scarlet ○
Series 3 284 600 158
1 • 2 • Y • ●



Red Fuchsite Genuine ○
Series 3 284 600 189
1 • 1 • Y • ○



Perylene Maroon
Series 3 284 600 074
1 • 4 • N • ●



Burgundy Red Ochre
Series 2 284 600 151
1 • 1 • Y • ○



Deep Scarlet
Series 1 284 600 033
1 (NR) • 3 • N • ●



Quinacridone Burnt Scarlet
Series 2 284 600 087
1 (NR) • 2 • N • ○



Naphthamide Maroon
Series 1 284 600 059
1 (NR) • 2 • N • ●



Piemontite Genuine ○
Series 4 284 600 191
1 • 2 • Y • ●



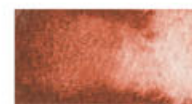
Hematite Violet ○
Series 3 284 600 157
1 • 2 • Y • ●



English Red Earth
Series 1 284 600 137
1 • 1 • Y • ●



Burnt Bronzite Genuine ○
Series 3 284 600 204
1 • 1 • Y • ○



Venetian Red
Series 1 284 600 111
1 • 3 • Y • ●



Enviro-Frnd Red Iron Oxide
Series 2 284 600 177
1 • 1 • Y • ●



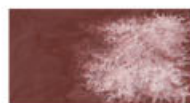
Mummy Bauxite ○
Series 1 284 600 166
1 • 2 • Y • ●



Indian Red
Series 1 284 600 044
1 • 3 • Y • ●



Raw Umber Violet
Series 1 284 600 098
1 • 2 • Y • ●



Lunar Red Rock
Series 1 284 600 141
1 • 2 • Y • ●



Hematite ○
Series 3 284 600 156
1 • 2 • Y • ●



German Green Raw Umber
Series 1 284 600 121
1 • 1 • Y • ●



Tiger's Eye Genuine ○
Series 2 284 600 161
1 • 1 • Y • ○



Burnt Tiger's Eye Genuine ○
Series 2 284 600 162
1 • 2 • Y • ○



English Red Ochre
Series 1 284 600 136
1 • 1 • Y • ○



Burnt Sienna
Series 1 284 600 010
1 • 1 • Y • ●



Permanent Brown
Series 2 284 600 068
1 (NR) • 3 • N • ○



Transparent Red Oxide
Series 1 284 600 130
1 • 1 • Y • ○



Transparent Brown Oxide
Series 1 284 600 129
1 • 1 • Y • ○



Enviro-Frnd Brown Iron Oxide
Series 2 284 600 178
1 • 1 • Y • ●



Burnt Umber
Series 1 284 600 011
1 • 2 • Y • ●



Sepia
Series 1 284 600 103
1 • 2 • Y • ○



Van Dyck Brown
Series 1 284 600 110
1 • 1 • Y • ●



Raw Umber
Series 1 284 600 097
1 • 2 • Y • ●



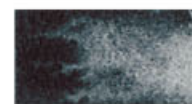
Bloodstone Genuine ○
Series 2 284 600 193
1 • 1 • Y • ○



Lunar Violet
Series 2 284 600 182
1 • 2 • Y • ●



Graphite Gray
Series 1 284 600 038
1 (NR) • 2 • N • ●



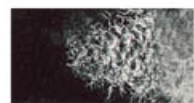
Payne's Gray
Series 1 284 600 065
1 • 2 • Y • ●



Lamp Black
Series 1 284 600 003
1 • 4 • N • ●



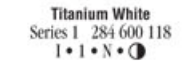
Ivory Black
Series 1 284 600 048
1 • 2 • Y • ●



Lunar Black
Series 1 284 600 049
1 (NR) • 2 • Y • ○



Chinese White
Series 1 284 600 023
1 • 1 • N • ●



Titanium White
Series 1 284 600 118
1 • 1 • N • ●

COLOR INFORMATION

from left to right (1 • 2 • Y • ●)

LR - ASTM LIGHTFASTNESS RATING
I=Excellent II=Very Good III=Fair IV=Fugitive
(NR)=Not rated by ASTM. Rating based on DS independent testing.

NON-STAINING/STAINING

1=Non-Staining 2=Low
3=Medium, 4=Staining

GRANULATION

N=No Y=Yes, in varying degrees

TRANSPARENCY

○=Transparent ●=Semi-Transparent
●=Opaque

○ PrimaTek® Series Paint
unique colors made with
authentic mineral pigments

DANIEL SMITH Luminescent™ Watercolor



216 Color Assortment RACK 2B



Duochrome Oceanic
Series 1 284 640 029
I • I • N • ○



Duochrome Green Pearl
Series 1 284 640 040
I • I • N • ○



Duochrome Blue Pearl
Series 1 284 640 039
I • I • N • ○



Duochrome Turquoise
Series 1 284 640 043
I • I • N • ○



Duochrome Cabo Blue
Series 1 284 640 044
I • I • N • ○



Duochrome Aquamarine
Series 1 284 640 030
I • I • N • ○



Duochrome Emerald
Series 1 284 640 042
I • I • N • ○



Duochrome Desert Bronze
Series 1 284 640 035
I • I • N • ○



Duochrome Saguaro Green
Series 1 284 640 037
I • I • N • ○



Duochrome Adobe
Series 1 284 640 036
I • I • N • ○



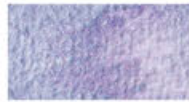
Duochrome Autumn Mystery
Series 1 284 640 047
I • I • N • ○



Duochrome Cactus Flower
Series 1 284 640 038
I • I • N • ○



Duochrome Hibiscus
Series 1 284 640 031
I • I • N • ○



Duochrome Violet Pearl
Series 1 284 640 041
I • I • N • ○



Duochrome Mauve
Series 1 284 640 026
I • I • N • ○



Duochrome Tropic Sunrise
Series 1 284 640 048
I • I • N • ○



Duochrome Lapis Sunlight
Series 1 284 640 049
I • I • N • ○



Duochrome Violet Fantasy
Series 1 284 640 045
I • I • N • ○



Duochrome Arctic Fire
Series 1 284 640 046
I • I • N • ○



Interference Blue
Series 1 284 640 001
I • I • N • ○



Interference Copper
Series 1 284 640 002
I • I • N • ○



Interference Gold
Series 1 284 640 003
I • I • N • ○



Interference Green
Series 1 284 640 004
I • I • N • ○



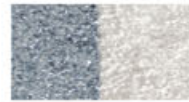
Interference Lilac
Series 1 284 640 005
I • I • N • ○



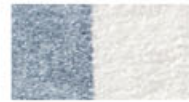
Interference Red
Series 1 284 640 006
I • I • N • ○



Interference Silver
Series 1 284 640 007
I • I • N • ○



Pearlescent Shimmer
Series 1 284 640 024
I • I • N • ○



Pearlescent White
Series 1 284 640 025
I • I • N • ○



Iridescent Moonstone
Series 1 284 640 034
I • I • N • ○



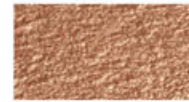
Iridescent Blue-Silver
Series 1 284 640 014
I • I • N • ○



Iridescent Sunstone
Series 1 284 640 022
I • I • N • ○



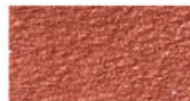
Iridescent Aztec Gold
Series 1 284 640 012
I • I • N • ○



Iridescent Bronze
Series 1 284 640 015
I • I • N • ○



Iridescent Goldstone
Series 1 284 640 018
I • I • N • ○



Iridescent Copper
Series 1 284 640 016
I • I • N • ○



Iridescent Gold
Series 1 284 640 017
I • I • N • ○



Iridescent Topaz
Series 1 284 640 023
I • I • N • ○



Iridescent Jade
Series 1 284 640 019
I • I • N • ○



Iridescent Garnet
Series 1 284 640 028
I • I • N • ○



Iridescent Russet
Series 1 284 640 020
I • I • N • ○



Iridescent Ruby
Series 1 284 640 032
I • I • N • ○



Iridescent Scarab Red
Series 1 284 640 021
I • I • N • ○



Iridescent Electric Blue
Series 1 284 640 027
I • I • N • ○



Iridescent Sapphire
Series 1 284 640 033
I • I • N • ○



Iridescent Antique Bronze
Series 1 284 640 008
I • I • N • ○



Iridescent Antique Copper
Series 1 284 640 009
I • I • N • ○



Iridescent Antique Gold
Series 1 284 640 010
I • I • N • ○



Iridescent Antique Silver
Series 1 284 640 011
I • I • N • ○

COLOR INFORMATION

from left to right, Luminescent colors are
(I • I • N • ○)

LR - ASTM LIGHTFASTNESS RATING I=Excellent

NON-STAINING 1=Non-Staining

GRANULATION N=No

TRANSPARENCY ○=Transparent

Luminescent™ Series Paint are optically reflective colors made with mica pigments. Use alone or mixed into standard colors, they create striking effects of light and color. Luminescent Paints contain—**Duochrome** colors that bounce between two distinctive colors. **Interference** and **Pearlescent** colors which appear almost colorless, but when applied over a dark color (shown in the color chart over black) they sparkle with color. **Iridescent** colors reflect light directly and provide a fascinating sense of depth and distinctive sheen.